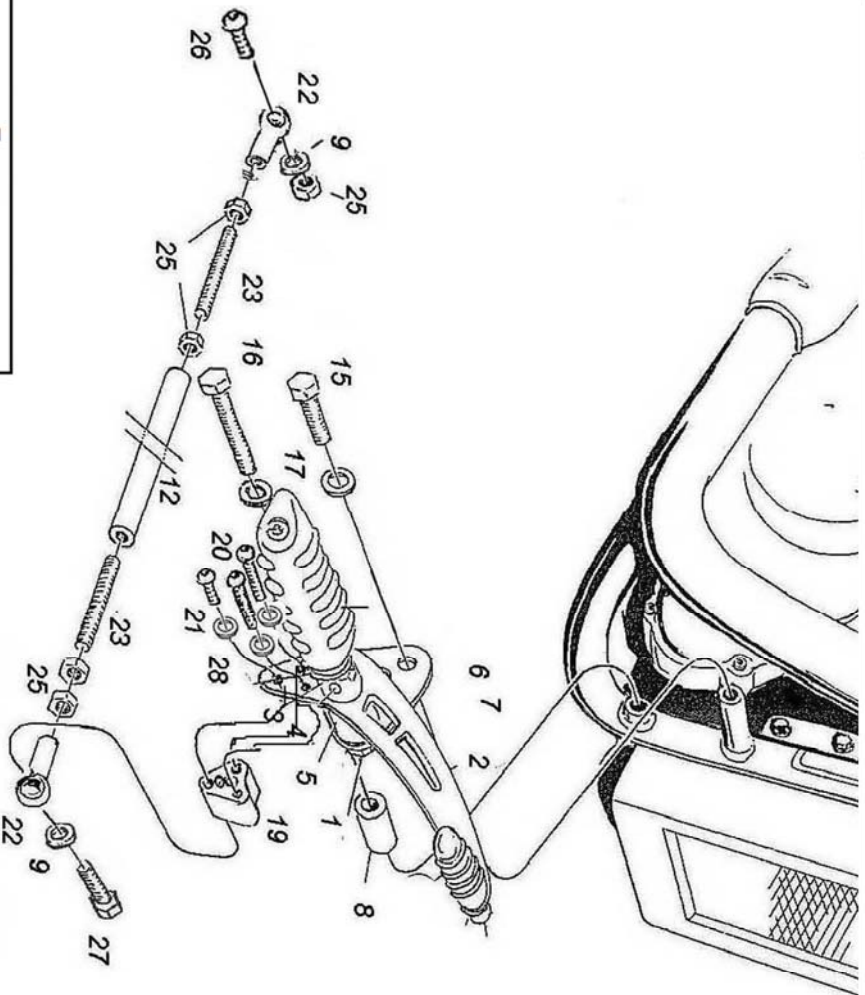
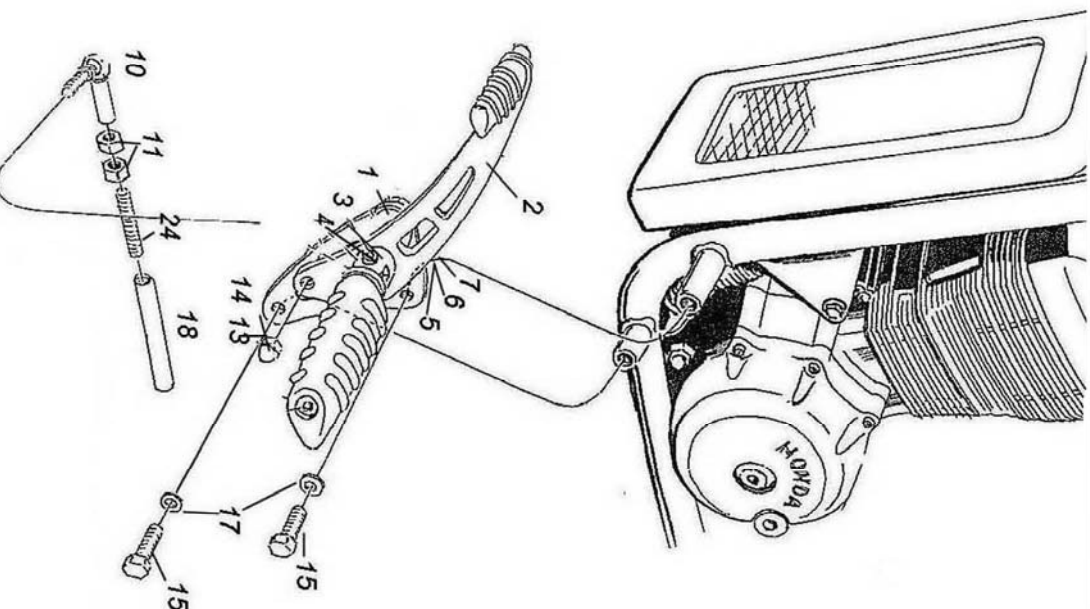


**Forward control**  
**Honda VT 600 / VLX 600**  
Art. no. 491-601 / 801



Torque			
Bolt size / thread	Steel	Steel 8.8	Stainless
M5	6Nm	9Nm	4Nm
M6	10Nm	15Nm	7.5Nm
M8	25Nm	37Nm	18Nm
M10x1.25	57Nm	83Nm	37Nm
M12x1.25	101Nm	149Nm	71Nm
M12	87Nm	130Nm	62Nm



**Revised # 2**

Please check all fixings and mounting points before assembly as listed on the mounting instruction sheet.

This accessory should be mounted by a professional mechanic only. Motolux International B.V. / Highway Hawk can not be held responsible for improper installation.

© Motolux Specialties B.V.  
Barnveld - The Netherlands